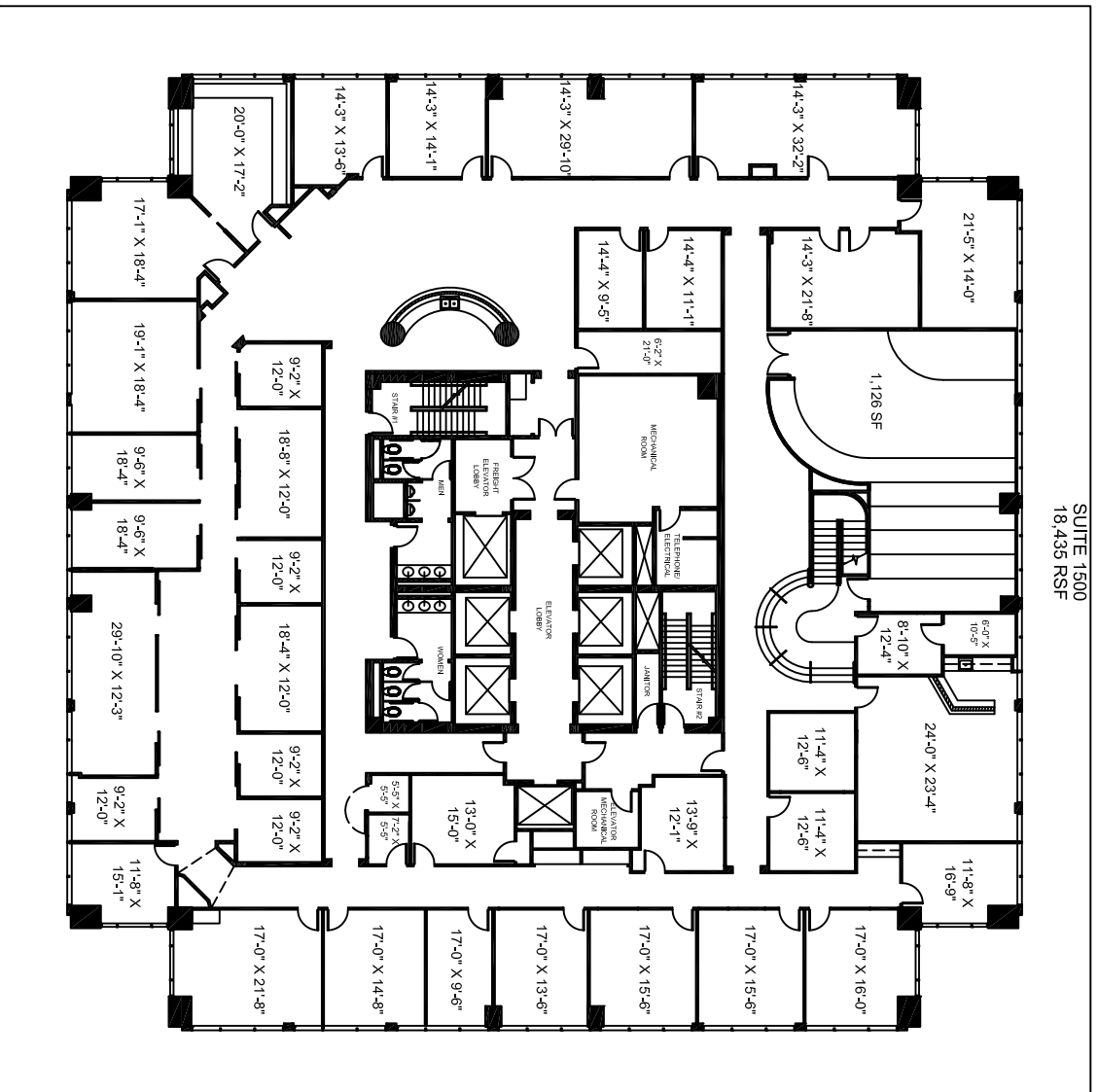




AVAILABLE
SUITE 1500
18,435 RSF



10440 N. Central Expy., Suite 500
Dallas, TX 75231
972.437.2444

FOR LEASING INFORMATION
CONTACT: NICK CLARK
NCLARK@PILLARCOMMERCIAL.COM

MEADOW PARK
10440 N. CENTRAL EXPRESSWAY
DALLAS, TEXAS 75231

CONFIRMED LEASE PLAN
FLOOR 15

rsf: 18,435

scale: n.t.s.

date: 03.16.09



208 north market street
suite 420
dallas, texas 75202
214.420.4646