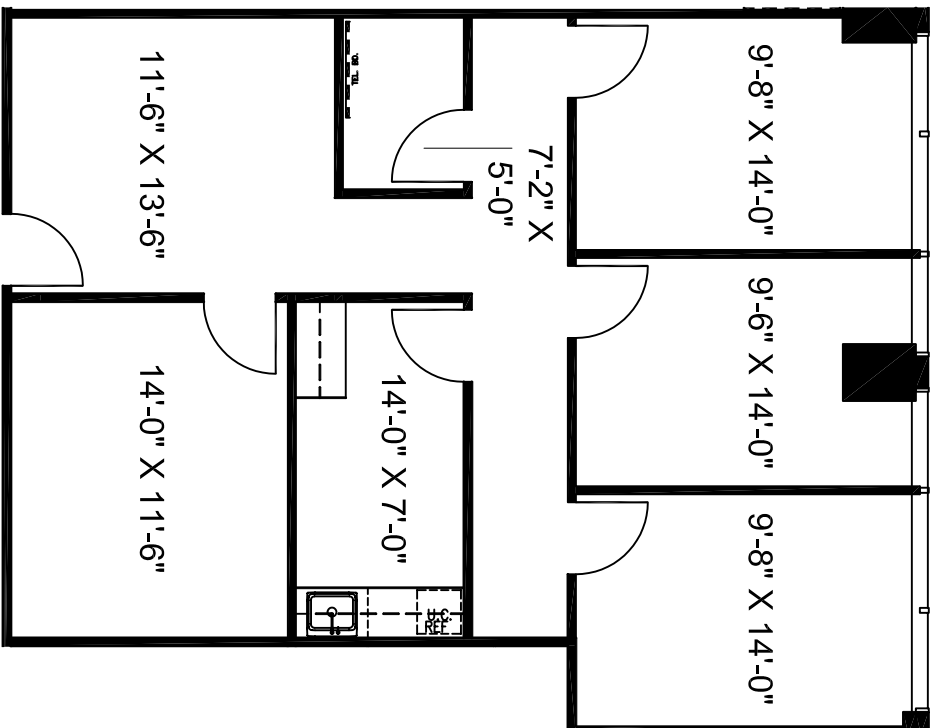


KEY PLAN



10440 N. Central Expy., Suite 500
 Dallas, TX 75231
 972.437.2444

FOR LEASING INFORMATION
 CONTACT: NICK CLARK
 NCLARK@PILLARCOMMERCIAL.COM



MEADOW PARK

10440 N. CENTRAL EXPRESSWAY
 DALLAS, TEXAS 75231

AS-BUILT PLAN
 SUITE 1280

rsf: 1,398

scale: 3/32" = 1'-0"

date: 06.23.08



208 north market street
 suite 420
 dallas, texas 75202
 214.420.4646