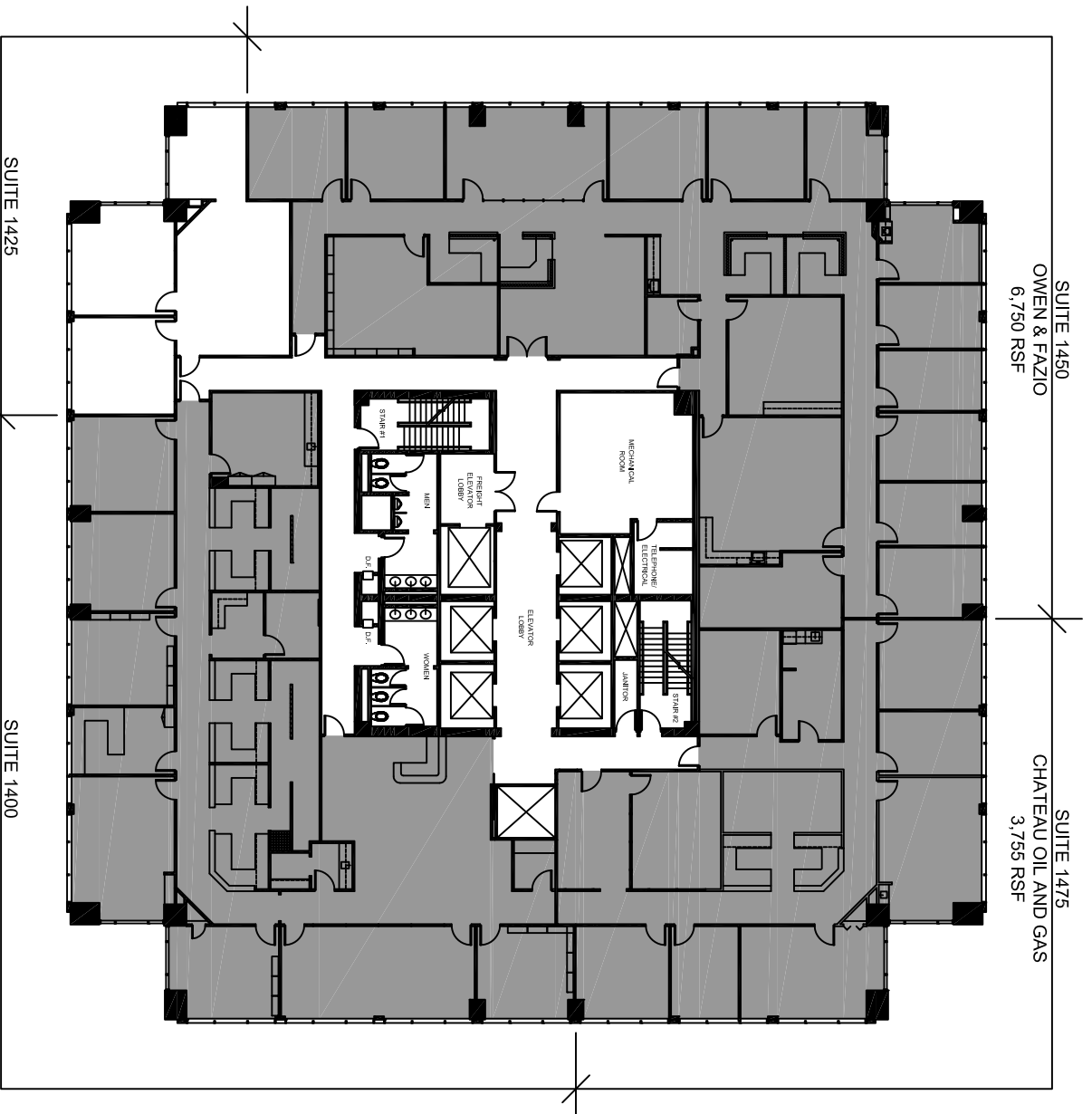




10440 N. Central Expwy., Suite 500  
 Dallas, TX 75231  
 972.437.2444

FOR LEASING INFORMATION  
 CONTACT: NICK CLARK  
 NCLARK@PILLARCOMMERCIAL.COM



**MEADOW PARK**  
 10440 N. CENTRAL EXPRESSWAY  
 DALLAS, TEXAS 75231

**CONFIRMED LEASE PLAN**  
 FLOOR 14

rsf: 17,651

scale: n.t.s.

date: 06.16.09



208 north market street  
 suite 420  
 dallas, texas 75202  
 214.420.4646